

Unleash the Power of OLAP

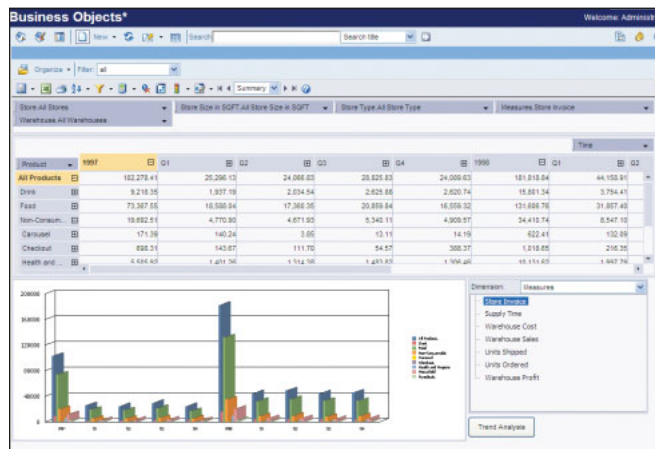
BusinessObjects OLAP Intelligence delivers powerful ad hoc analysis and easy to design and deploy managed analysis for today's leading multidimensional database servers.

It delivers native access to Microsoft SQL Server Analysis Services, Hyperion Essbase, IBM DB2 OLAP, and SAP BW.

Ad Hoc and Managed OLAP Analysis

Many organizations choose to deploy multidimensional OLAP server technology in different areas—like finance and marketing—to meet their information analysis needs. These organizations typically make an OLAP server investment to provide power users with fast access to historical data stored in a pre-aggregated, multidimensional format. These users want to analyze data in an intuitive interface and share their discoveries with others in the organization.

BusinessObjects™ OLAP Intelligence is a powerful and easy-to-use tool that allows you to access and analyze data stored in the leading OLAP servers. It uniquely satisfies the analysis requirements of both information analysts (power users) and less sophisticated knowledge workers (business users). With OLAP Intelligence, power users can slice and dice, drill, rank, sort, filter, create calculations on the fly, and perform speed-of-thought data exploration. And business users can interact with prebuilt OLAP workbooks that contain highly intuitive, graphical views of business activity, guided navigation and workflows, and flexible ad hoc analysis.



BusinessObjects OLAP Intelligence delivers best-of-breed OLAP power and prebuilt analysis for business users.

OLAP Intelligence is built on the BusinessObjects Enterprise XI business intelligence (BI) platform. Its advanced analysis capabilities, shared security, and relational drill-through allow you to standardize on Business Objects for all of your BI needs. OLAP Intelligence delivers:

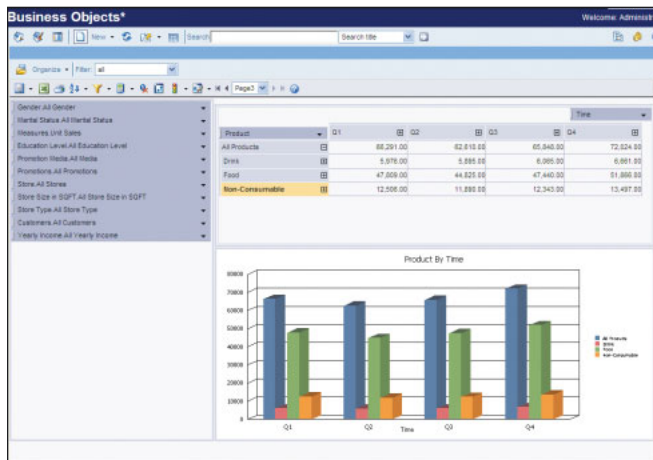
- ▶ Best-of-breed ad hoc OLAP
- ▶ Managed OLAP authoring and distribution
- ▶ Integration with the market leading, trusted BI platform

Best-of-Breed Ad Hoc OLAP

The primary driver for implementing an OLAP database is to provide users with fast access to multidimensional data. IT develops focused OLAP cubes to provide users with a structured data environment, optimized for analysis. But in order for users to take advantage of the pre-aggregated data within an OLAP cube, they require an interface that allows them to drill, slice, and dice while leveraging the response times that the predefined OLAP cube environment offers.

Speed-of-Thought Analysis

OLAP Intelligence provides an intuitive, web-based interface that allows users to select dimensions and members from a query panel as well as perform similar analysis from integrated Windows, Microsoft Excel, and ActiveX client interfaces. Users can interact with their data and ask spontaneous questions to uncover trends and identify anomalies. And because OLAP Intelligence takes advantage of the power of the OLAP cube, users are guaranteed speed-of-thought response time.



OLAP Intelligence provides native access to Microsoft SQL Server Analysis Services, Hyperion Essbase, IBM DB2 OLAP, and SAP BW.

Intuitive, Function-Rich Interface

The OLAP Intelligence interface is both intuitive and function-rich. Common functions such as ranking, filtering, highlighting, quick calculations, zero suppression, and axis swapping are available with a single click of the mouse. More advanced analyses are only a few mouse clicks away and provide an uncluttered, intuitive user interface that requires minimal training. With OLAP Intelligence, users can also asymmetrically display data and hide specific dimensions that are irrelevant to data exploration.

Deep, Open Access to Microsoft, Hyperion, and SAP OLAP Servers

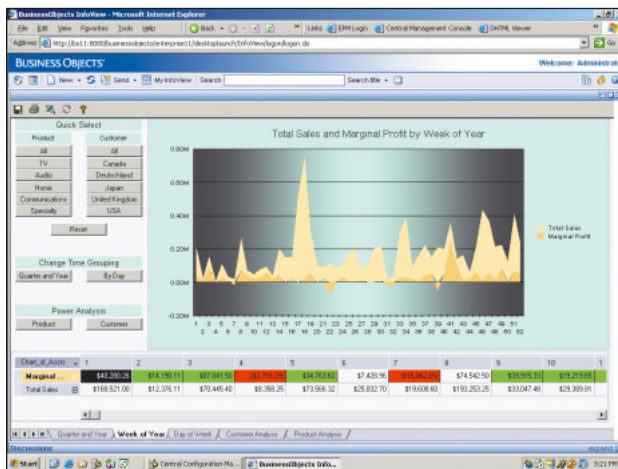
With OLAP Intelligence, you get best-of-breed, ad hoc OLAP for today's leading, multidimensional database servers—Microsoft SQL Server Analysis Services, Hyperion Essbase, IBM DB2 OLAP, and SAP BW. For example, native Hyperion Essbase 7.x support for free-form calculations and cube actions means that organizations are maximizing their OLAP server investments and taking advantage of key enhancements and optimizations.

Managed OLAP Authoring and Distribution

OLAP Intelligence goes further than most OLAP clients on the market today by not only providing powerful ad hoc analysis, but also delivering a flexible, managed OLAP environment. With OLAP Intelligence, you can easily create sophisticated workbooks that exploit the power of the underlying OLAP server, and enable users to build in predefined navigation paths and workflows. Then you can securely deploy and deliver the workbooks live to business users who don't necessarily fit the power-data analyst profile. These OLAP workbooks may contain custom buttons and multi-page reports that recipients can view and interact with over the web.

Easy-to-Use Workbook Design Environment

OLAP Intelligence provides power users and report authors with an easy-to-use, free-form design environment for OLAP workbook creation. Using wizards, templates, or simple drag-and-drop—you can easily design tailored analytical workflows. Once a report is created, you can lock it and prevent users from changing the objects on each page, while still allowing them to use the analytical features (drill down, pivot, and calculations). And designers can even build actions into workbooks that link to BusinessObjects Web Intelligence, Crystal Reports®, Microsoft Office documents, web pages, and other applications.



With OLAP Intelligence, you can deliver OLAP power and predefined navigation paths, workflows, and buttons.

Publish Live OLAP Workbooks to Business Users

When users view an OLAP Intelligence workbook over the web, it may appear as a dashboard with custom functionality specific to one area of the business, or as an ad hoc interface that allows them to perform advanced analysis. Because OLAP Intelligence has a flexible design and was created to meet powerful ad hoc and managed analysis needs, the deployment possibilities are limitless.

Built-In Guided Navigation and Data Exploration

With OLAP Intelligence you can guide users through the OLAP data navigation and exploration process. For example, a user can highlight a group of cells in a report, click a custom analysis button, and view a new graph that has drilled down on the chosen group, displaying variances as a worksheet and chart. A show trend analysis button could then be made available that displays a new page in the workbook with a year-over-year comparison.

Ad Hoc and Managed OLAP Analysis

BusinessObjects OLAP Intelligence

- Design, tailor, and deliver live OLAP workbooks to business users via the web
- Easily access, explore, and understand multidimensional OLAP data
- Maximize your OLAP server investments
- Extend flexible and powerful analysis to more users
- Standardize on Business Objects for all BI needs

Integration with the Market-Leading, Trusted BI Platform

Because OLAP Intelligence is seamlessly integrated with the BusinessObjects Enterprise XI business intelligence platform, it shares a common BI portal, administration, and security with the rest of the BusinessObjects XI suite. It's available in ten languages and on Windows, Sun Solaris, HP-UX, and IBM AIX UNIX platforms. And it is the ideal client to meet your specialized analysis needs on market-leading OLAP servers, while enabling broader BI standardization requirements through a shared, trusted, and proven BI platform.

Drill-Through from Summary to Detailed Reports

Open drill-through capabilities in OLAP Intelligence empower users to drill from aggregated OLAP data down to relational details. This means that users can navigate and explore summarized information, and drill through and pass context to more detailed Crystal Reports or BusinessObjects Web Intelligence documents. This contextual drill-through technology provides users with intelligent navigation without the need to understand the complexities of underlying data and metadata structures.

Bring Full OLAP Power to Microsoft Excel Environment

The full analytical power of OLAP Intelligence is also available from within Microsoft Excel, where analysts can natively query and analyze OLAP data and combine it with other sources. Users can choose to create a new data source connection or export data—live within Excel—from the Windows or web client. Users can also view data even if a data source connection is unavailable, and save files in Excel to share them inside and outside the enterprise.

Built on the Market-Leading, Trusted BI Platform

Tight integration with BusinessObjects Enterprise XI, and best-of-breed ad hoc and managed OLAP analysis make OLAP Intelligence the right choice for your specialized OLAP server requirements and BI standardization. Thanks to BusinessObjects Enterprise, OLAP Intelligence users can have threaded discussions about OLAP workbooks, benefit from a scalable, services-based architecture, and confidently deploy and manage BI.

The Best Choice on the Market Today

BusinessObjects OLAP Intelligence provides best-of-breed, ad hoc, and managed OLAP analysis for today's leading multidimensional database servers. By allowing users to easily access, explore, and understand Microsoft, Hyperion, IBM, and SAP OLAP data, Business Objects provides your organization with the extreme insight you need to extend your competitive advantage. To learn more about OLAP Intelligence or the BusinessObjects XI suite, visit our website at www.businessobjects.com.

► www.businessobjects.com

Americas
Tel: +1 800 877 2340

Asia-Pacific
Tel: +65 6887 4228

Europe, Middle East, Africa
Tel: +33 1 41 25 21 21

Japan
Tel: +81 3 5447 3900